

# Requests for our guests visiting Nakagin Capsule Tower

## *Coronavirus infection control measure*

*In consideration of the health and safety of our guests and guides, your guide will be wearing a mask as a precautionary measure.*

*Each area is carefully cleaned using disinfectants, especially high-touch areas such as lights, switches, handles and knobs.*

*The capsule room is ventilated using a powerful air circulator.*

## Stay at home if...

your body temperature is 37.5 Celsius or higher in the morning of the tour date.

We will reschedule your tour date in case you can not make it on booked day.



## Sanitize hands

Please sanitize hands and fingers before entering.

Hand sanitizer is available at the entrance of the building.

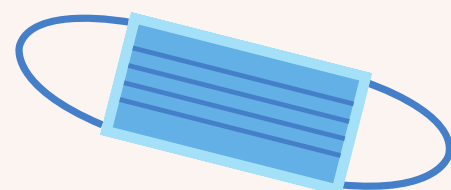


## Wear a mask

To promote the health and safety of our communities, face coverings are required indoors.

Please be considerate of others when coughing or sneezing.

Please take your used mask with you when leaving a room.



## Please note that the following guests will not be admitted to the tour:

- Those who have been in close contact with person who tested positive for the COVID-19.
- Those who have family members or close acquaintance who are suspected of being infected.
- Those who have within the last 14days traveled to or been in close contact with persons residing in countries and regions subject to Japan's entry ban.

## Maintain social distancing.



Thank you for your understanding and cooperation!